



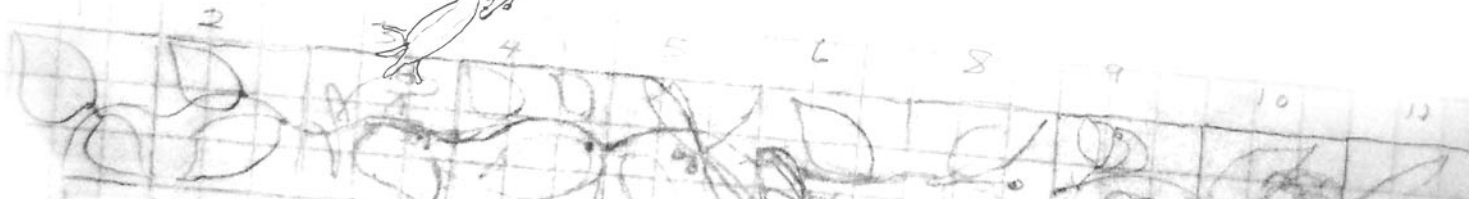
Original Collection

The 4" Nature Tiles

Our first and most popular line includes four lizards, four amphibians, four insects, four leaves, three fish, and two turtles. These tile have been installed successfully with many different readily available stones and tiles and also look great with tumbled marble. Frequently they are inserted randomly in bathrooms, kitchens, and other settings. If you choose a random installation we recommend resisting the temptation to use more than two or (at most three) background colors.

We like it if a pattern is created so we offer connector tiles. The Vine Series works with the Tree Frog and the Chameleon. Add a Dragonfly on Vine, a Butterfly on Vine, and a Ladybug on Vine with Vines and Vine Corners. The Vine piece flips to form an endless flowing border and the Vine End will make a graceful ending anywhere. The Vine Corner gives you the ability to create frames, mirror borders and double rows.

servino
© 2004

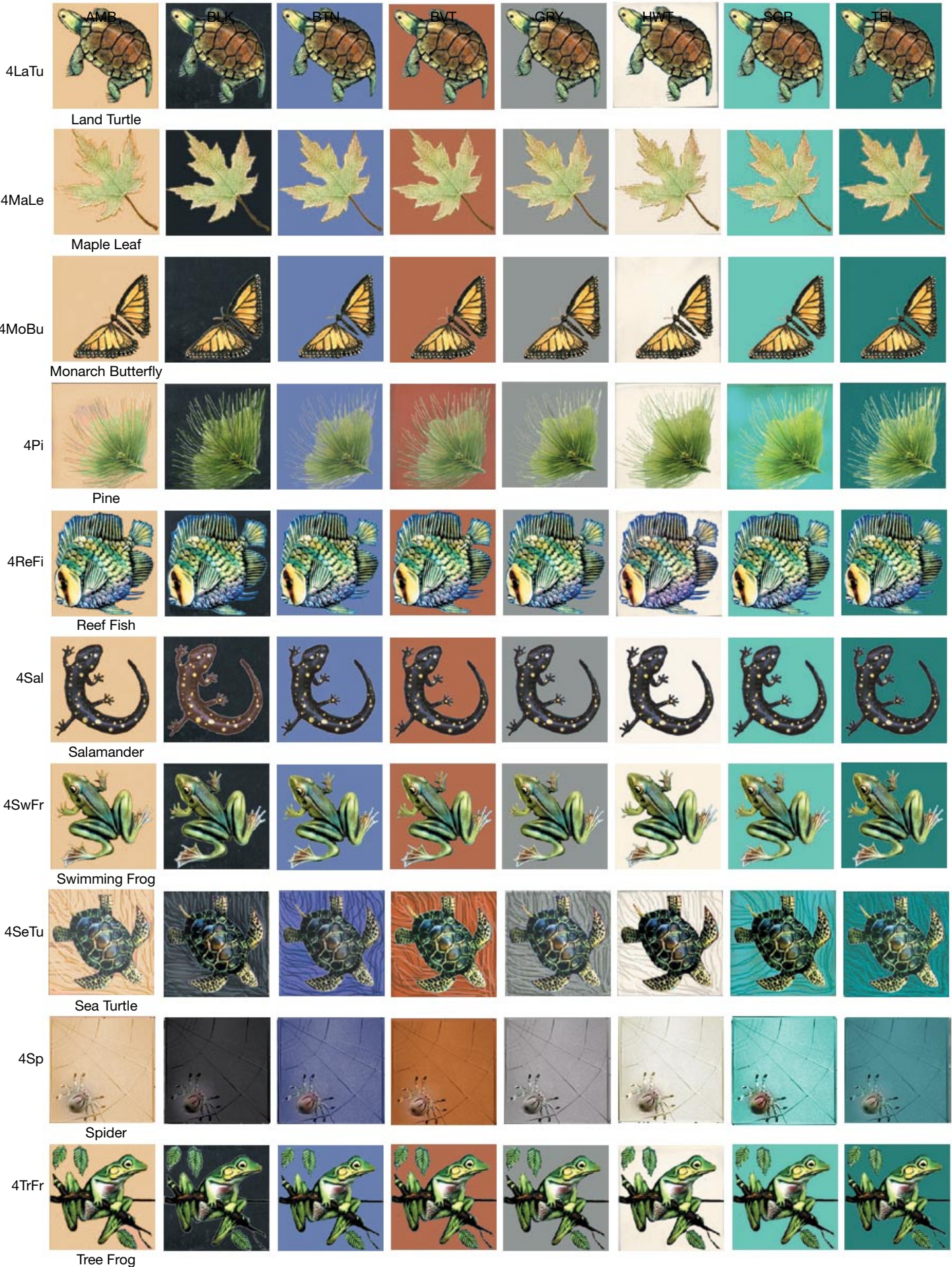


Our newest additions, the 4" Wave and the 4" Swirl work best with the Sea Turtle and the Jellyfish. These new designs also compliment the Swimming Frog, Angelfish, and Reef Fish. Use the Swirl to create an end piece or a corner for your design.

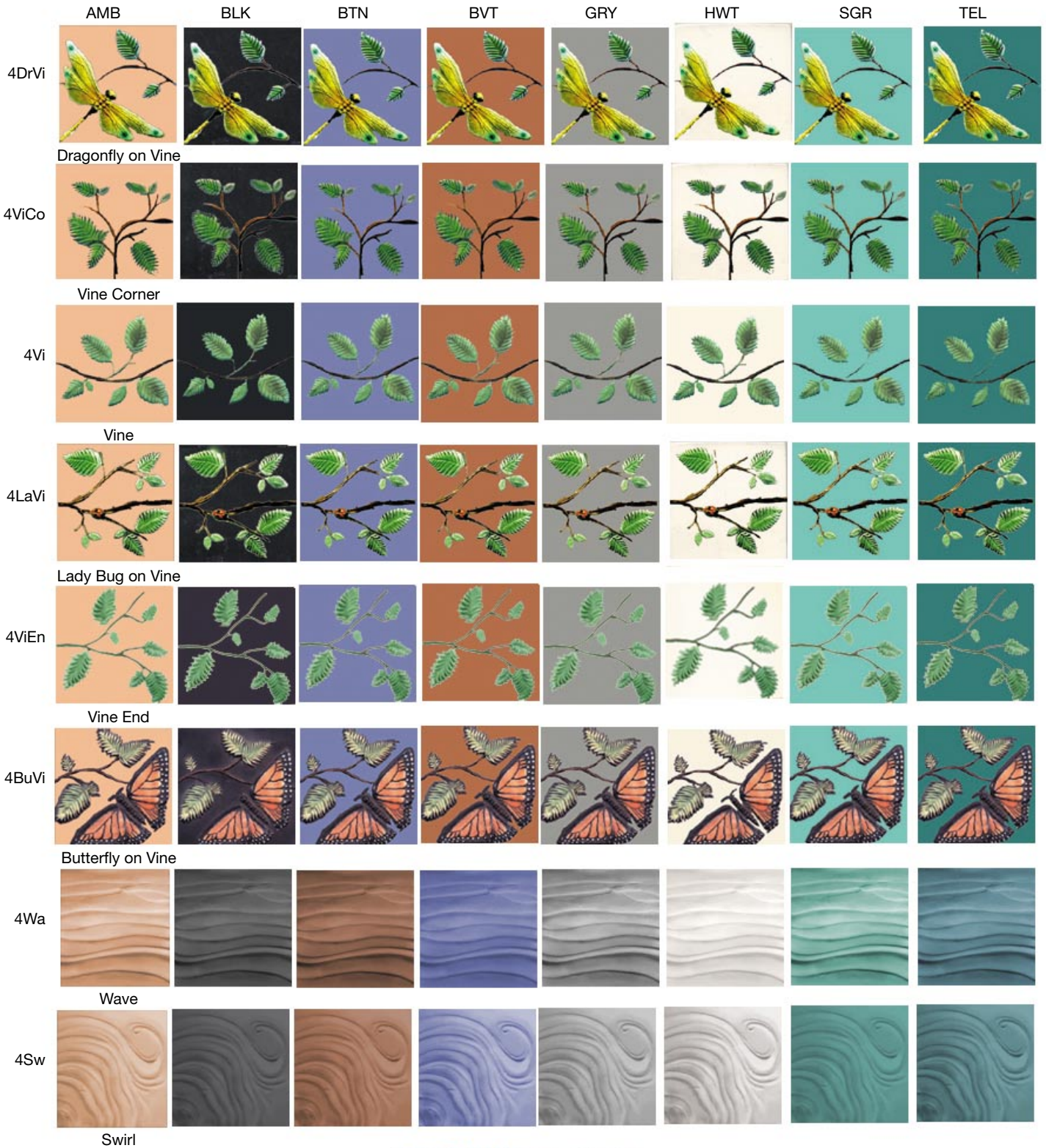
Use our 6" Frames in our solid colors for the 4" tiles. Subtle nature patterns of leaves and sea fans grace the 8" Frames for the 4" tile. Framed tile can be inserted amongst other field tile.



SURVING STUDIOS



SURVING STUDIOS



4Ba



Bark



Rock Wall

4RoWa