

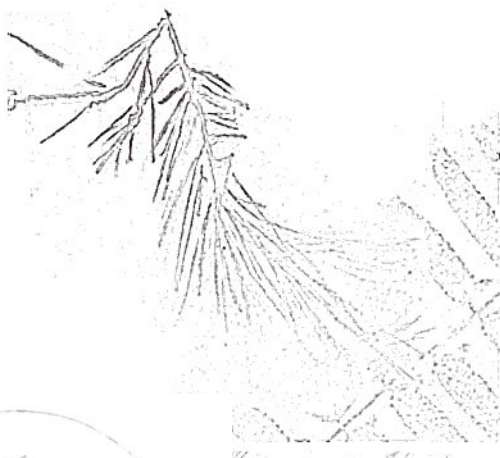


Original Collection

Field Tiles

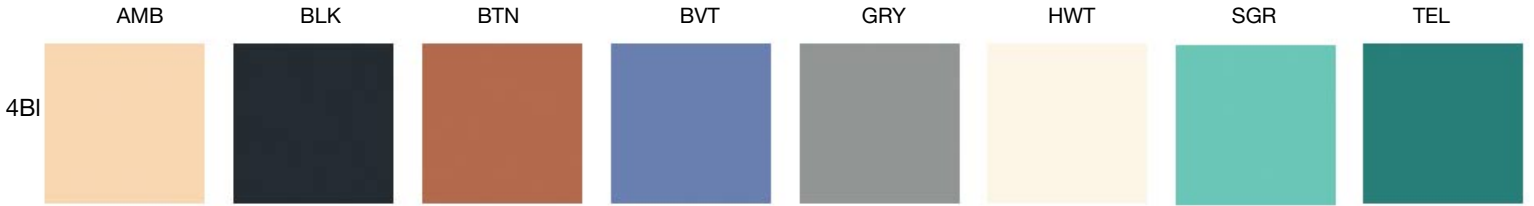
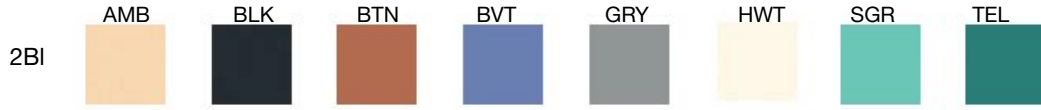
Surviving Studios makes field tile to match all of our decorative tile background colors in 2", 4", and 6" squares. Their beauty is enhanced by the variation to be expected in a handmade tile. Neither sizes nor colors are exact.

When Natalie is the one creating, she looks for much more variation within the colors. She likes to make a wall of field tile that has the interest of abstract art. Let us know your preference when ordering.



Surviving
Natalie © 2004

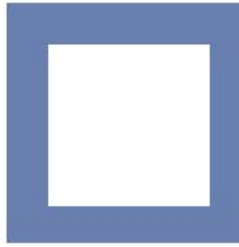
SURVING STUDIOS



Amber, Black, Blue Violet, Browntone, Gray, Highlight White, Sea Green and Teal.

The icons here only represent a small sample of potential actual tile. Natural materials are used in the making of each tile, therefore, each order will be unique.

6" frame for a 4" tile

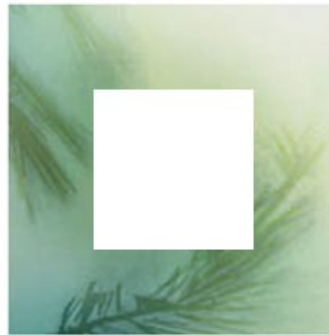


4" frame for a 2" tile



Narrow frames are available in background colors Amber, Black, Blue Violet, Browntones, Gray, Highlight White, Sea Green and Teal.

8" frame for a 4" tile



6" frame for a 2" tile



Wide frames are available in sprayed leaf background colors.

Sumac in Sunlight &Teal

Pine in Spring Greens

- Branches in Graytones
- Ferns in Browntones
- Juniper in Graytones
- Pine in White & Spring Greens
- SeaFan in Water World Fade
- Sumac in Sunlight & Teal

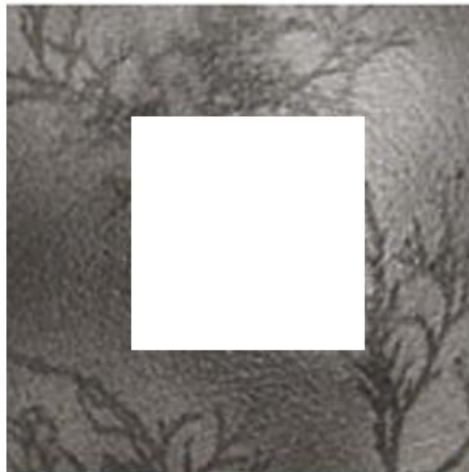
Additionally, Bark or Rock textured frames are offered in natural colors. Special coloring is also available.

12" frame for a 4" tile



Ferns in Browntones

12" frame for a 6" tile



Juniper in Graytones